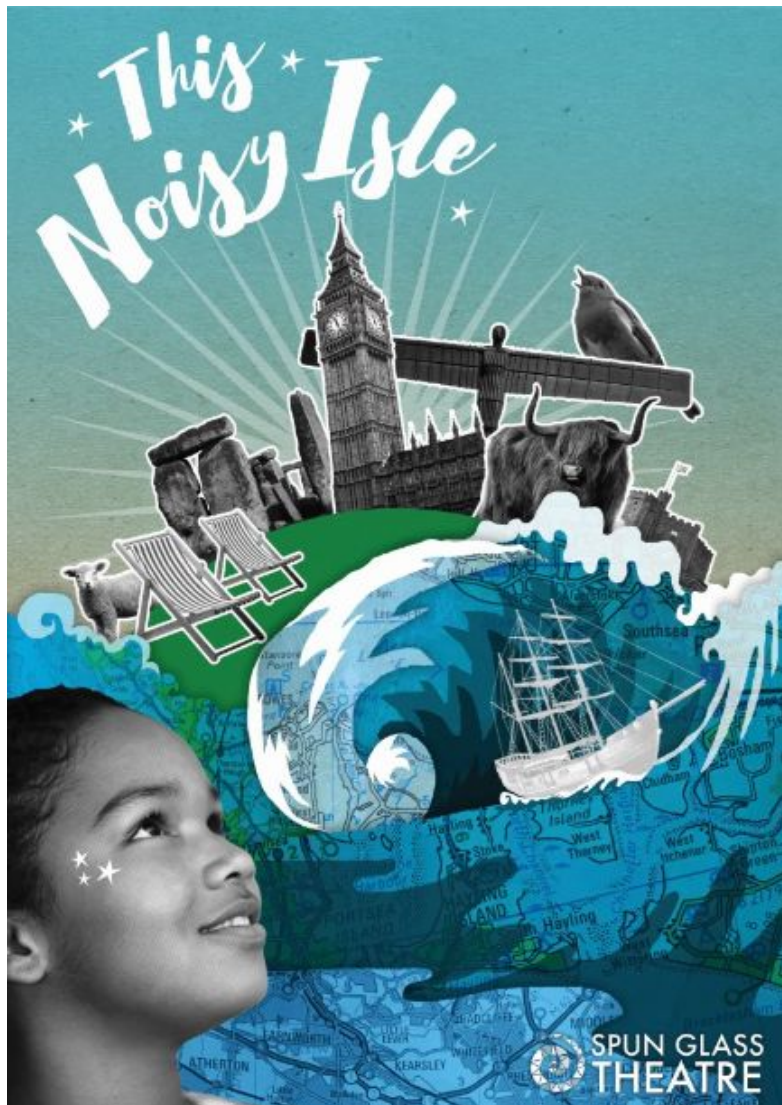




@Spun_Glass
FB/spunglasstheatre
spunglasstheatre.com

Spun Glass Theatre present
This Noisy Isle
Tour Pack



This Noisy Isle is a treasure-hunt style performance for families inspired by *The Tempest* and exploring the refugee crisis in an adventurous way.

This Noisy Isle

A treasure-hunt show giving 7-11 year-olds an adventure through a strange, magical new world.

You've washed up on a new shore...

Can you navigate through this world where nothing is quite what it seems? The inhabitants of this island make strange noises and sprites hide around every corner. Where do you belong?

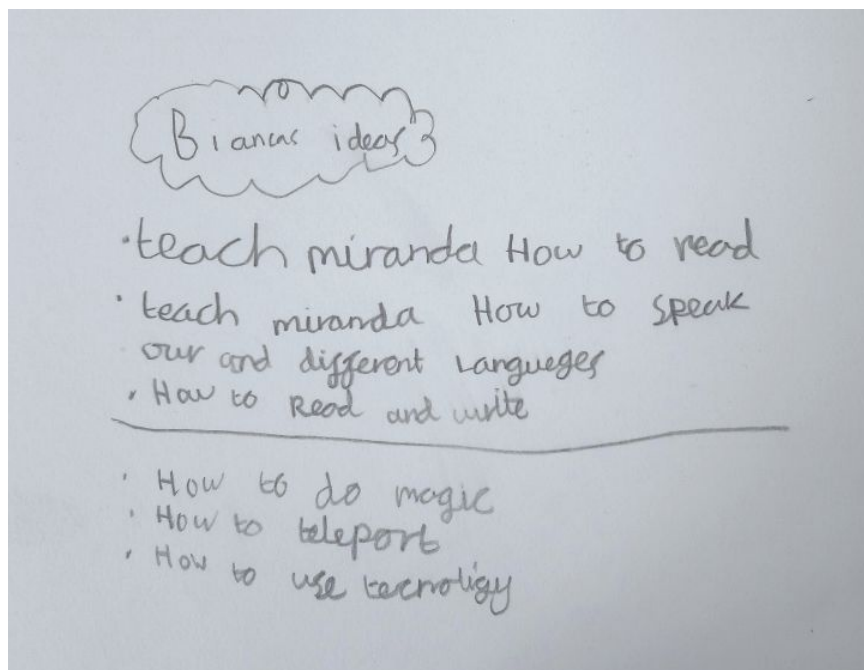
Discover your own magical powers in this truly interactive family experience. Join us for a mission which will lead you through puzzles, meeting mysterious characters and steering your team through the choppy seas to search for your new home.

Come prepared for the elements as much of this adventure takes place outdoors!

Created in partnership with Creative Arts East, The Garage, Norwich and Arts Council England.

Trailer

<https://youtu.be/AwHTd5p5C5s>



Technical Requirements

Covid-19 Safety

- Can be performed indoors or outdoors
- Four solo performers so can be safely rehearsed
- Audiences can experience the show within their family bubbles

Minimum requirements from venues:

- Green room for performers
- Box office support
- We perform in outdoor and indoor spaces local to your venue – families pick up tickets from you and are sent to the start position with a map – the production ends back at the theatre.
- FOH support

Performance

- One hour fifteen minutes (no interval)
- Spun Glass Theatre can perform for one day, two days, three days or a week's run.
- Each booking can be accompanied by a participation programme.
- One day consists of up to 18 performances with a capacity of 16 audience members, running every 15 minutes from 10am-12pm and 1pm-3pm (total capacity 288)

Get-in & Get-out:

- 1 day Get-in/relocate in the local area
- Walk through with the performers – one hour before first performance goes up
- 1 hour get out

Size of the company:

5 on the road –

4 performers and 1 production manager.

All Spun Glass Theatre productions are supported by a comprehensive marketing pack.

Cost - £1100 – one day.

£950 for each consecutive day.

Spun Glass Theatre

Spun Glass Theatre are an award-winning production company experimenting with crossing theatre and popular performance forms to create radical, anti-elitist performance. We devise original productions based on classic texts and work directly with communities to bring creativity out of traditional arts spaces.

We have a strong record for creating innovative children's work including 'Princess Charming' a cabaret for kids exploring gender stereotypes, co-produced by Ovalhouse. 'Princess Charming' was described as "pertinent and powerful" (A Younger Theatre), "an absolute gem of a show" (West End Wilma), "hilarious, touching and truthful" (Female Arts).

Princess Charming had a successful national tour in Autumn 2018 visiting 16 venues including Cambridge Junction, ARC Stockton and Tobacco Factory Theatres.

WestEnd Wilma - ★★★★★ *'Princess Charming' is an absolute gem of a show. Exploring gender stereotypes using the very clever medium of a cabaret aimed at 7-11 year olds, it is entertaining, informative (though never preachy) and vitally, incredibly relevant.*

<http://www.westendwilma.com/review-princess-charming-ovalhouse/> - Ovalhouse 2017

We work in partnership with independent artists and theatre companies to combine artist-led audience development, fundraising and project management with each artist's vision and form, creating more space for groundbreaking art to be made.



Project supporters



Contact Details:

For further information contact Jessica Cheetham, Producer on jessica@spunglasstheatre.com | 07746313410